

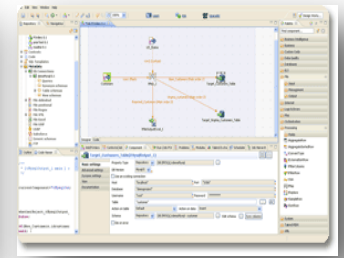
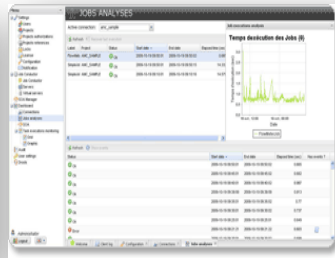
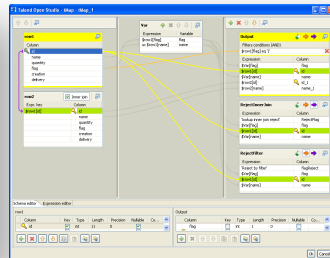
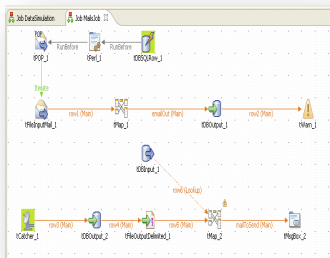


# Jaspersoft ETL™ | Data Integration for BI

Jaspersoft ETL (extract, transform, and load) powered by Talend is the most flexible, powerful, and affordable open source tool for data integration requirements. Designed to support one to many developers while scaling to the highest levels of data volumes and process complexity. Developers can graphically design, schedule, and execute data movements and transformations for business intelligence projects, such as loading an Operational Data Store (ODS), Datamart, or Data Warehouse.

When used with Jaspersoft Business Intelligence suite, Jaspersoft ETL enables organizations to develop, manage, and document data integration processes for improved reporting and analysis.

Because Jaspersoft ETL is open source-based, you get the best of both worlds: contributions and support from the world’s largest community of data integration developers as well as commercial support, professional services and training from Jaspersoft



## MAKE FASTER, BETTER BUSINESS DECISIONS WITH JASPERSOFT ETL

- Consolidate data sources into a central data warehouse or datamart
- Improve developer productivity with 450+ pre-built components and connectors
- Business-oriented process modeling integrates business and IT user collaboration
- Shared design environment consolidates job dependencies and metadata
- Built-in advanced components support slowly changing dimensions, data lineage, and more
- Highly available platform ensures maximum uptime in mission critical environments
- Monitoring and management dashboard presents instant view to all data integration jobs
- Dynamic event triggered job model supports automation requirements
- Audit records provides qualitative and quantitative metrics for job optimization

## ETL TECHNOLOGY HIGHLIGHTS AND BENEFITS

Metadata driven architecture	Central repository stores all project information
Distributed Architecture	Data is processed at location closest to source maximizing compute resources & latency
Business Rules support	Rules governer describes data path and related dependencies
Change data capture support	Support slowly changing dimensions with CDC
Eclipse GUI based framework	Wizards and pre-built components speed design process

## Why Jaspersoft ETL?

There are compelling forces driving the requirements for ETL to be used for Business Intelligence:

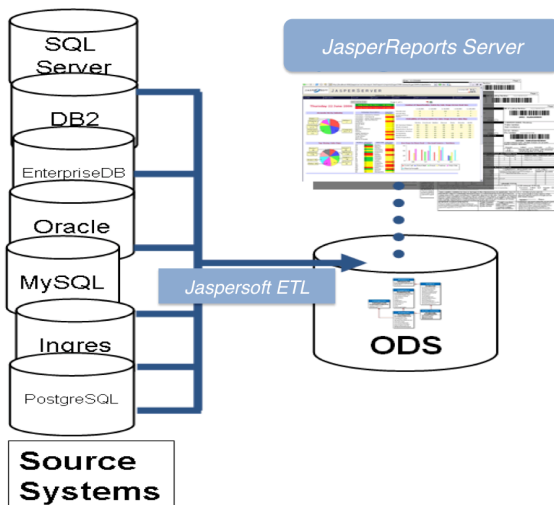
- Well over 50% of data integration projects are implemented through manual coding – primarily because proprietary data integration tools are too expensive
- Data volumes and heterogeneity of databases and applications continue to increase year-over-year, and this heightens the requirement for data integration tools to deliver high productivity in terms of data integration development, run-time performance, and scalability
- Compliance and audit requirements have increased, mandating documented, easily maintained integrations
- Data integration is critical for any BI system to improve the timeliness and quality of reporting and analysis

## Load Data into an ODS for Reporting

With Jaspersoft ETL, multiple data sources can be consolidated into a single operational data store (ODS). An ODS provides a centralized location for reporting, and takes the processing load away from mission-critical operational applications so that their performance is not impacted by reporting users.

An ODS is not the same as a data warehouse. An ODS has only current operational data while a data warehouse contains both current and historical data.

Reporting tools such as JasperReports Server are data source agnostic, and can report against data in either operational systems, or an ODS, or in fact pretty much anywhere else.



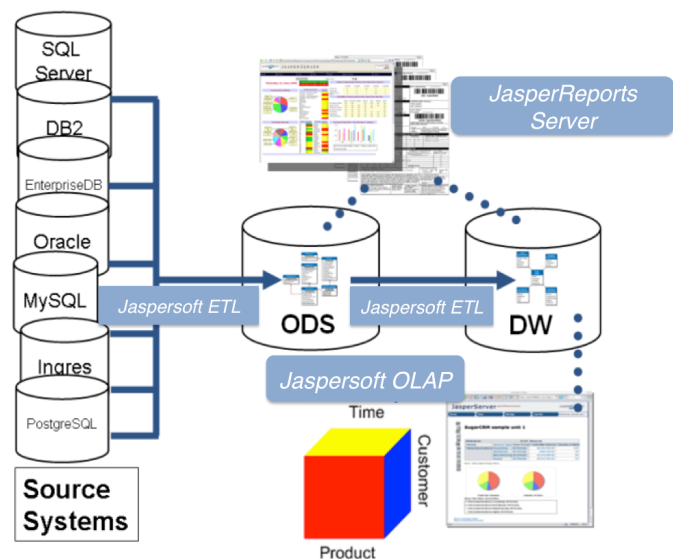
## Loading Data into an ODS for Reporting

## Load Data into a data warehouse or datamart for analysis

In contrast to an ODS, for analysis purposes datamarts and data warehouses are optimized for query expressiveness and high performance against large volumes of both current and historical data. Datamarts and warehouses typically use a de-normalized star or snowflake schema approach to improve query response times.

Typically data warehouses combine data from across an entire enterprise over time. In contrast data marts are more specific to an application and focus on a particular subject or department.

Jaspersoft ETL is suited for extracting, transforming, and loading an ODS, data mart, or data warehouse. With 450+ connectors, Jaspersoft ETL can extract data from just about any environment whether its an application such as SAP, Salesforce.com, or SugarCRM. Once connected to the source data, several complex transformations can be performed on the data to appropriately load into a relational, analytic, or non-relation data store.



## Using a Datamart or Data warehouse for Analysis

### Jaspersoft ETL at a Glance

Jaspersoft ETL comprises of three major application components, the Business Modeler, Job Designer, and Metadata Manager, all housed within an Eclipse and web based development environment.

#### Key Benefits:

- **Productivity:** Using Jaspersoft ETL, it is much easier to create, manage, and maintain your data integration processes. The intuitive graphical user

interface provides a rapid learning curve with minimal training.

- **Affordability:** In contrast to traditional data integration tools Jaspersoft ETL is available through a low-cost subscription, minimizing initial investment.
- **Flexibility:** Jaspersoft ETL can process ETL and ELT (extract, load, and transform) models, connect to operational applications such as SAP, and using web services.
- **Scalability:** With its distributed architecture Jaspersoft ETL provides a scalable solution – ideal for small and medium size businesses, or for larger enterprises.

### Graphical Business Modeler & Job Designer

The Business Modeler leverages a top-down approach, allowing line-of-business stakeholders to get involved in the design of the integration processes. The Business Modeler provides a non-technical view of a business workflow. This typically includes both the systems and processes already operating in the organization, and future needs.



The **Job Designer** provides both a graphical and a functional view of the actual integration processes.

The graphical palette of components and connectors, known as the Component Library, drives the design of integration jobs with a simple drag-and-drop efficiency. Relationships can be defined between components and properties. Most of these properties are already inherited from the metadata.

The Component Library includes over 450 components and connectors, providing basic functions such as mappings, transformations, lookups; specialized functions such as data filtering, data multiplexing, or ELT; and support for all major RDBMS, file formats, and LDAP directories. The Component Library can easily be extended using industry-standard languages such as Perl, Java or SQL.

### Collaborative Development

Jaspersoft ETL’s shared metadata manager is designed to consolidate all project information and metadata into a centralized repository within an industry-standard source manager (SVN). This promotes reusability of objects with object-level check-in and check-out. Users, roles, permissions, & privileges are managed centrally through integration with LDAP-compliant systems.

### Enterprise Capable Features

Jaspersoft ETL supports a series of automation features to facilitate the development and implementation of complex data integration jobs.

#### Impact Analysis & Data Lineage

Helps users know the path followed by data through the information system and the impact of a change on the data structure or transformation processes

#### Change Data Capture

Quickly identify and capture data that has been added to, updated in, or removed from the database tables, making these changes available to subscribers

#### Business Rules

Business rules let users incorporate JBoss Rules Governor (BRMS) for a centralized definition and administration of JBoss compliant business rules

#### Project Auditing

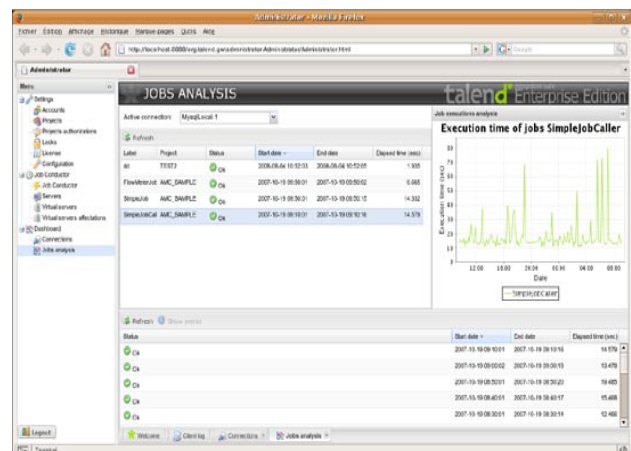
Capture qualitative and quantitative metrics that are calculated against best practices to help optimize data integration projects

#### Distant Run

Remote execution of jobs on any server directly from the central repository

### Centralized Administrative Dashboard

Web based administration center offers a complete view into all job processing with instant visibility to performance and execution status.



### **Job & Grid Conductor**

Schedule execution of jobs based on time or event while automatically mapping to available execution servers. Each job can be distributed across a grid of servers for optimal use of server resources

### **Distant Run**

Enable remote execution of jobs on specified systems for testing jobs on a stage box or configuration or for simply running jobs upon request on specific systems

### **Activity Monitoring**

Provides real-time gauges and status indicators of job execution status and performance.

## **Open Approach**

Proprietary tools are truly proprietary: a black box which hides back-end processes. Jaspersoft ETL is open source-based, and you can access, modify and extend the source code if you wish. Also traditional tools use proprietary transformation engines and languages. In contrast Jaspersoft ETL generates open Perl, Java, and SQL code that is executed by industry-standard engines

## **Simple, Affordable Pricing**

Traditional ETL tools have complex and expensive pricing versus Jaspersoft ETL's simple pricing model. Traditional tools may sometimes look affordable initially, but they often charge by a combination of CPUs, platforms, developers, connectors, and data processed. In contrast Jaspersoft ETL pricing is based upon the number of ETL developer seats. Run Jaspersoft ETL on as many CPUs and servers as you like, and business application and RDBMS connectors are included at no extra cost. Jaspersoft ETL delivers by far the lowest total cost of ownership in the ETL market, making it affordable yet powerful for companies of all sizes.

## **Minimum Requirements**

Jaspersoft ETL has few external dependencies:

- Java JDK 1.5 or higher
- Windows 2000, Windows, XP, or Windows Server 2003
- Red Hat, Ubuntu, SuSE and other leading distributions

## **Subscription Services**

Jaspersoft offers annual subscriptions for the entire Jaspersoft Business Intelligence Suite. Subscriptions include high value items such as:

- Commercial platform support
- Advanced features
- Technical Support up to 7x24
- Indemnification
- Training
- Commercial License grant
- Advanced product documentation
- Jaspersoft newsletters
- Access to the Customer Portal

## **Professional Services**

New ETL and Business Intelligence users can receive direct assistance from Jaspersoft Professional Services, and consultants can work directly with you to evaluate your needs and help you develop optimal ETL, analysis, and reporting solutions. Also, if you are migrating to JasperReports Server, Jaspersoft OLAP, or Jaspersoft ETL, Jaspersoft consultants are ready to help architect and implement the most efficient solution for your organization.

## **Contact Jaspersoft Today**

For information about Jaspersoft partnerships, OEM licensing, products, support, or services offerings:

<b>Jaspersoft Headquarters:</b> 539 Bryant Street, Suite 100 San Francisco, CA 94107, USA phone: +1 888.399.2199 or +1 415.348.2380 Email: sales@jaspersoft.com	<b>Jaspersoft Europe, Middle-East, Africa:</b> 4 St. Catherines Lane Dublin 8, Ireland Phone: +353 1 443 4700 Email: sales-emea@jaspersoft.com	<b>Jaspersoft Asia Pacific, Japan, Australia/NZ:</b> 36 <sup>th</sup> Floor, CRC Tower, All Seasons Place 87/2 Wireless Rd., Lumpini, Phatumwan Bangkok 10330 Thailand Phone: +66 2 625-3165 Email: sales-apac@jaspersoft.com
---	--	--

registered trademarks of Jaspersoft Corporation in the United States and in jurisdictions throughout the world. All other company and product names are or may be trade names or trademarks of their respective owners.